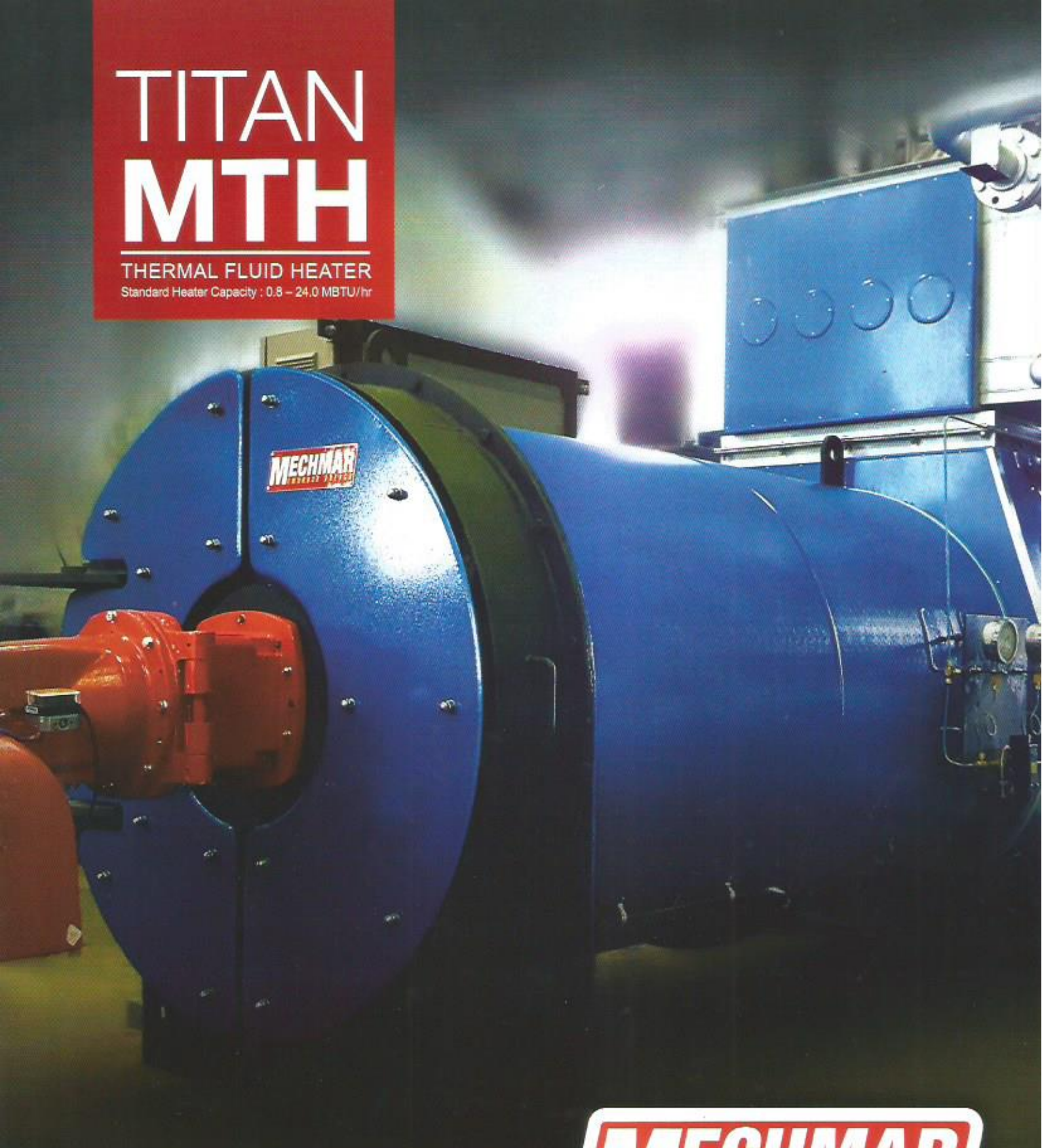


TITAN MTH

THERMAL FLUID HEATER

Standard Heater Capacity : 0.8 – 24.0 MBTU/hr



MECHMAR
EMBRACE ENERGY

TITAN MTH

The **Titan MTH** is the preferred choice for industries that require heat via a heating medium other than steam or hot water or other alternative direct heating methods. Briefly the combustion chamber consists of a close-wound coil formed from seamless pipe through which thermal fluid is circulated. When combustion takes place, radiant heat is captured on the inner surface of the coil and convective heat from the combustion gasses are recovered as they pass over the outer surface of the coil. The Titan MTH for process heating over a wide range of temperatures, mineral oil or synthetic hydrocarbon thermal fluids.

FEATURES

- High operating temperature (up to 300°C) with low operating pressure.
- It is high flexibility of process temperatures to multiple user processes can be achieved from a single heating system with automatic control system.
- No water treatment system required.
- No corrosion, scale formation.
- Reduced system losses.
- Low operating maintenance cost.

DESIGN CONCEPT

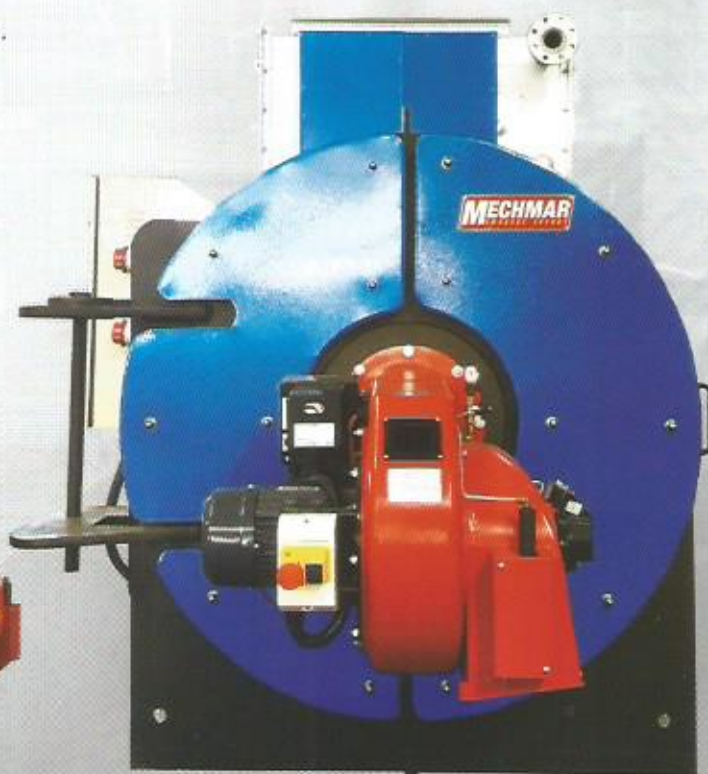
- 3-pass double coil design.
- Robust design and construction for longer life span.
- Fully automated operation system.

OPTIONAL FEATURES

- Air Preheater to maximise thermal efficiency.



Side View



Front View

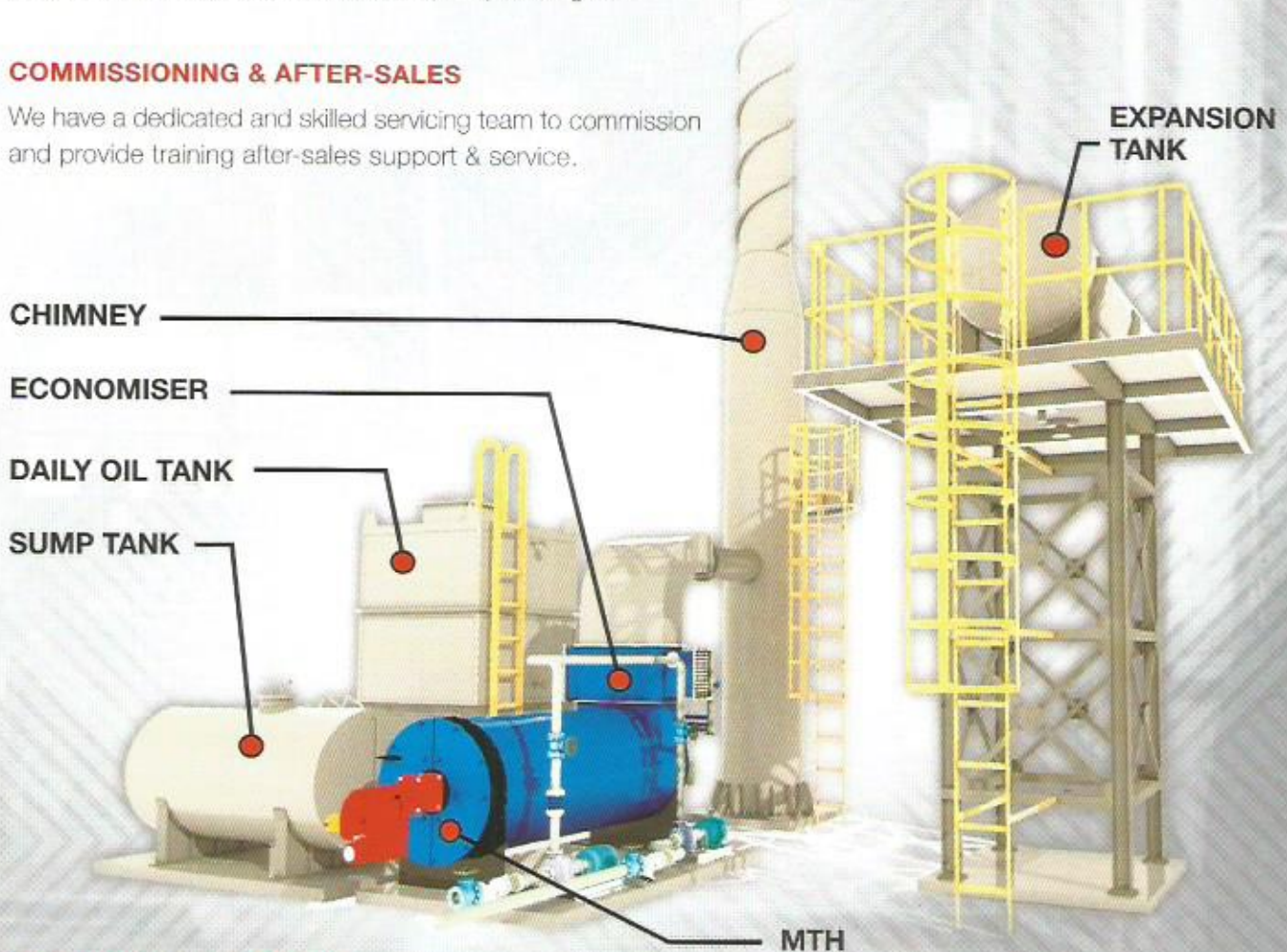


DESIGN AND MANUFACTURED TO INTERNATIONAL STANDARDS (ASME SECTION 1)

The Titan MTH's boiler pressure parts are fabricated by our dedicated in-house manufacturing facility, ISO 9001 certified and licensed by Lloyd's Register of Shipping as a Class 1 Pressure Vessel Manufacturer and the Titan MTH is fabricated to the highest possible standards. In addition, all boilers manufactured are subjected to Third Party Inspection by Lloyd's Register.

COMMISSIONING & AFTER-SALES

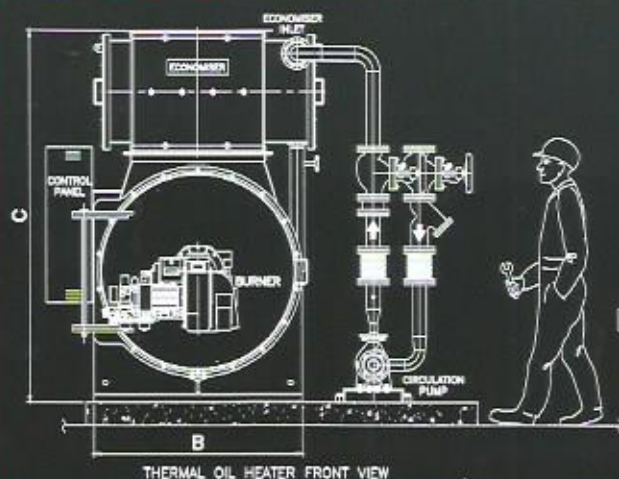
We have a dedicated and skilled servicing team to commission and provide training after-sales support & service.



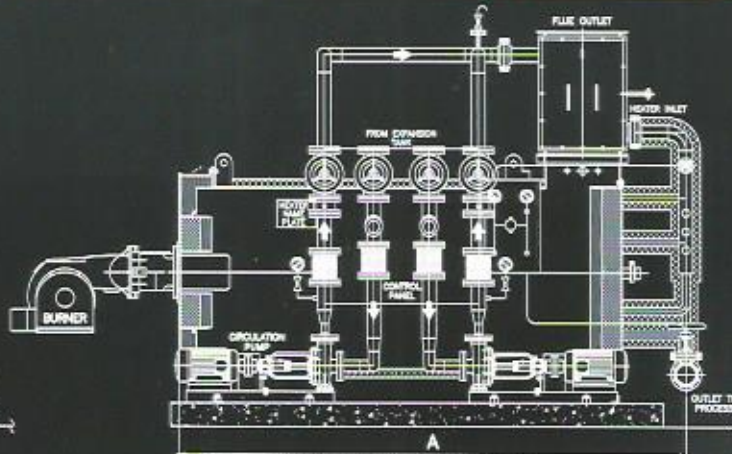
INDUSTRIAL APPLICATION

Chemical	- Reactors and reboilers
Textile	- Stenders and printers
Plastics and Rubber	- Presses, calenders and extruders
Food Industries	- Cookers, deodorizers and spray driers
Construction	- Roadstone coating, autoclaves for accelerated concrete curing and silica / lime brick making
Laundry	- Washers, tumblers, ironers and presses
Storage & Distribution	- Heating tank farms, marine cargo and road tanker residues
Wood	- Platten presses and drying kilns

BOILER MODELS & CAPACITY



THERMAL OIL HEATER FRONT VIEW



THERMAL OIL HEATER ELEVATION VIEW

THERMAL FLUID HEATER MODEL

HEATER CAPACITY

MBTU / hr

DIMENSIONS

A

mm

B

mm

C

mm

FLOW & RETURN CONNECTION

NB

H.T. PUMP CAPACITY

m³ / hr

PUMP MOTOR

kW

STACK CONNECTION

mm

FLUID HOLD-UP

m³

DRY WEIGHT

MTON

FOUNDATION WEIGHT

MTON

MTH 0.8

0.8

0.23

2605

1102

1965

80

10

5.5

254

0.23

1.41

2.95

MTH 1.6

1.6

0.47

2940

1200

2240

80

21

7.5

305

0.30

1.68

3.57

MTH 2.4

2.4

0.73

3042

1280

2232

80

31

7.5

355

0.34

1.98

4.18

MTH 3.2

3.2

0.94

3292

1352

2395

80

42

11

355

0.40

2.30

4.86

MTH 4.0

4

1.17

3462

1442

2475

100

52

11

457

0.68

2.69

6.07

MTH 6.0

6

1.76

3994

1580

2500

100

78

15

558

0.81

3.23

7.28

THERMAL FLUID HEATER MODEL

HEATER CAPACITY

MBTU / hr

MW

DIMENSIONS

A

mm

B

mm

C

mm

FLOW & RETURN CONNECTION

NB

H.T. PUMP CAPACITY

m³ / hr

PUMP MOTOR

kW

STACK CONNECTION

mm

FLUID HOLD-UP

m³

DRY WEIGHT

MTON

FOUNDATION WEIGHT

MTON

MTH 8.0

8

2.34

4780

1812

2860

125

104

18.5

558

1.56

4.36

10.67

MTH 10.0

10

2.93

4754

1960

3046

150

131

22

635

2.01

5.34

13.25

MTH 12.0

12

3.51

5146

2070

3200

150

157

30

710

2.36

5.75

14.62

MTH 16.0

16

4.68

5844

2262

3854

200

209

37

765

2.78

7.04

17.70

MTH 24.0

24

7.03

7930

2442

3750

250

313

75

830

4.75

10.45

27.40

MECHMAR
EMBRACE ENERGY

MECHMAR GROUP

MALAYSIA

HEADQUARTERS

Mechmar Boilers Sdn Bhd
Mechmar After Sales & Services Sdn Bhd
Mechmar Boilers International Pte Ltd
No. 1 Jalan Perunding U1/17,
Hiom Glenmarie Industrial Park,
40150 Shah Alam, Selangor Darul Ehsan
Tel: +603 5660-3698
Fax: +603 5660-1308
Email: enquiry@mechmar.com.my

MANUFACTURING

Mechmar Boilers Sdn Bhd
Lot 14, Jalan Timah,
Pasir Gudang Industrial Estate,
81700 Pasir Gudang, Johore
Tel: +607 2513-682, +607 2513-683
Fax: +607 2523-494
Email: enquiry@mechmar.com.my

INDONESIA

PT Mechmar Jaya Industries

Kawasan Industri Medan,
J.L.K.L. Ybs Sudarno KIM 1,
Medan, Indonesia
Tel: +62 61 8850-306
Fax: +62 61 8850-307
Email: ptmj@mechmar.com.my

PT Mechmar Jaya Industries

Apartemen Gading Nias Residence
Tower Dahlia, Lt. 16, Unit NW
J.L. Pegangsaan I No.3, Kelapa Gading
Jakarta Utara
Tel: +621 3019-1828 / 38 / 48
Mobile: +6262-1711-5708
Email: ptmj@mechmar.com.my

SRI LANKA

Mechmar Cochran Lanka (Pvt) Ltd

543, Negombo Road, Wattala, Sri Lanka
Tel: +94 11 2847-182, +94 11 4818-998
Fax: +94 11 2847-182
Email: mechmar@sl.lk
wicks@mechmar.lk

Toll Free No: 1800-88-3030